

# WELCOME TO YEAR 1



GREEN CLASS: MRS WILLIAMS (TUE - FRI)  
AND MRS MEARS (MON)  
- MRS GOLDSMITH

-

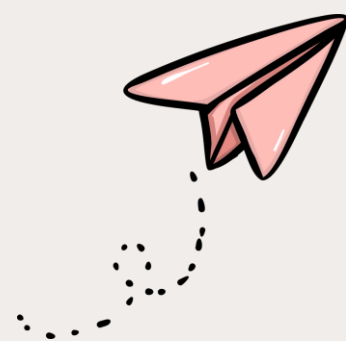
YELLOW CLASS: MRS HARTFIELD (MON,  
WED - FRI) AND MRS MEARS (TUE)  
- MISS ARUNDEL (MON - WED, FRI)  
- MRS SAPIA (THUR)



# EXAMPLE OF YEAR 1 TIMETABLE - AUTUMN TERM

Time	Monday	Tuesday	Wednesday	Thursday	Friday
08:40-08:50	Morning Work – sentence writing <b>Sensory circuits</b>	Morning Work – sentence writing <b>Sensory circuits</b>	Morning Work – sentence writing <b>Sensory circuits</b>	Morning Work – sentence writing <b>Sensory circuits</b>	Morning Work – sentence writing <b>Sensory circuits</b>
Session 1	8:50 – 9:15 Celebration of the Word	8:50 – 9:05 In Class Celebration of the Word	08:50-09:30 RWI	8:50 – 9:05 In Class Celebration of the Word	8:50 – 9:15 Whole School Collective Worship
Session 2	9:20 – 10:00 RWI	09:10 – 9:50 RWI	09:30 – 9:45 KS1 Collective Worship	9:05 – 9:45 RWI	9:15 – 10:00 RWI
	NEWMAN MILE	NEWMAN MILE	NEWMAN MILE	PPA	NEWMAN MILE
Session 3	10:05 – 10:45 Maths Sorting objects lesson 1	9:55 – 10:45 Maths Sorting objects lesson 2	9:55 – 10:45 English Creating our own 'Not a stick'	Music and P.E.	10:05 – 10:45 Maths Count objects from a larger group
10:45-11:00	Break	Break	Break 10:45 – 11:00		Break
Session 4	11:00 – 11:40 English Dictated sentence – not a box	11:00 – 12:00 English Ordering colourful semantics and writing sentence	11:00 – 12:00 Computing		11:00 – 12:00 English Children writing their own 'Not a stick' sentences using objects in the classroom
Session 5 12:00 – 12:15					
12:15-1:00	Lunch	Lunch	Lunch	Lunch	
	Dough Disco	Dough Disco	Dough Disco		Dough Disco
Session 6	History How long has our school been open for?	Science Identifying and classifying seeds	Maths Count objects	Forest School	R.E. To know that all things come from God – <b>Nicene</b> creed drawing activity
13:55 – 14:10	Break	Break	Break	Break	Break
Session 7	R.E. Recognising the story of creation – Godly Play	Science PSHE-Belonging to groups and communities	P.E. Fundamental Exploring balance	Forest School	Art What do I look like?
3:00 – 3:15	Talk through Stories	Talk through Stories	Talk through Stories	Talk through Stories	Talk through Stories





# TERMLY OVERVIEWS

## (AVAILABLE ON SCHOOL WEBSITE)

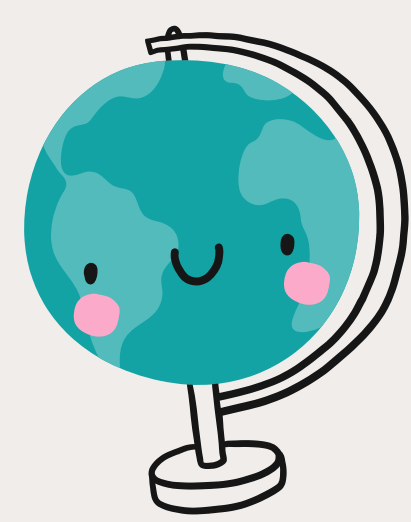
### CARDINAL NEWMAN CATHOLIC PRIMARY SCHOOL

#### YEAR 1 TERMLY OVERVIEW – Autumn 2025



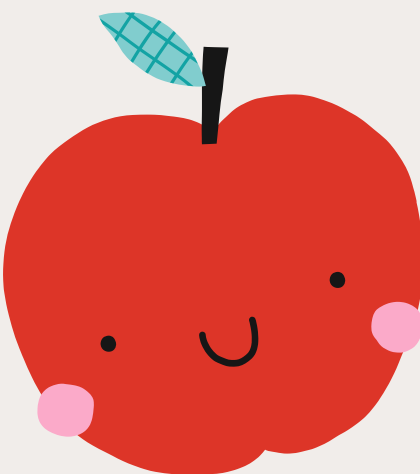
Week	Events	R.E.	PHSE	English	Maths	Science	Geography/ History	Art/DT	Music	Computing	PE
1st Sept	Children return Thursday 4 <sup>th</sup> Sept	<u>Our School Mission Statement</u>	<u>Rights and Responsibilities</u>  Class rules and charter for the new year	Letter formation  Simple sentence writing	<u>Recalling previous learning</u>  Numbers to 20.  Number formation						
8th Sept	Partners in Learning Meeting  Yellow Class Forest School (Thursday 11 <sup>th</sup> )	<u>Covenant and Creation</u>	<u>Rights and Responsibilities</u>  Zones of regulation	<u>Not a stick/ box</u>  Writing simple sentences	<u>Place Value</u>  Sorting and Counting  Count objects from a larger group	<u>Seasonal Changes</u>	<u>History</u>  How long has our school been open for?	<u>Art – What do I look like? What surrounds me?</u>	<u>The Hare and the Tortoise – Tempo</u>	<u>Computing systems and networks – IT around us</u>  Technology in the classroom. How to log in and sign out	<u>Gymnastics</u>  <u>Fundamentals</u>





# THE TRANSITION FROM EYFS TO KEY STAGE 1

- Practical activities to support learning
- Opportunities to revisit the Early Learning Goals from Reception
- Initially learning is structured in short chunks with movement breaks and short burst activities planned alongside
- Responding to the children and needs for free play etc throughout the week



# MATHS



Across the school we follow the 'White Rose' scheme of learning for Maths. This uses a mix of practical and hands on activities as well as workbooks to give children the opportunity to record their learning.

Year 1 (v3)

Scheme of learning

Supporting materials

	Week 1	Week 2	Week 3	Week 4	Week 5	Week 6	Week 7	Week 8	Week 9	Week 10	Week 11	Week 12
Autumn	<div>Number</div> <div>Place value (within 10)</div> <div>FREE TRIAL</div> <div>VIEW</div>					<div>Number</div> <div>Addition and subtraction (within 10)</div> <div>VIEW</div>				<div>Geometry</div> <div>Shape</div> <div>VIEW</div>	<div>Consolidation</div>	
Spring	<div>Number</div> <div>Place value (within 20)</div> <div>VIEW</div>		<div>Number</div> <div>Addition and subtraction (within 20)</div> <div>VIEW</div>		<div>Number</div> <div>Place value (within 50)</div> <div>VIEW</div>		<div>Measurement</div> <div>Length and height</div> <div>VIEW</div>		<div>Measurement</div> <div>Mass and volume</div> <div>VIEW</div>			
Summer	<div>Number</div> <div>Multiplication and division</div> <div>VIEW</div>		<div>Number</div> <div>Fractions</div> <div>VIEW</div>		<div>Geometry</div> <div>Position and direction</div> <div>VIEW</div>	<div>Number</div> <div>Place value (within 100)</div> <div>VIEW</div>		<div>Measurement</div> <div>Money</div> <div>VIEW</div>	<div>Measurement</div> <div>Time</div> <div>VIEW</div>		<div>Consolidation</div>	

# W R I T I N G

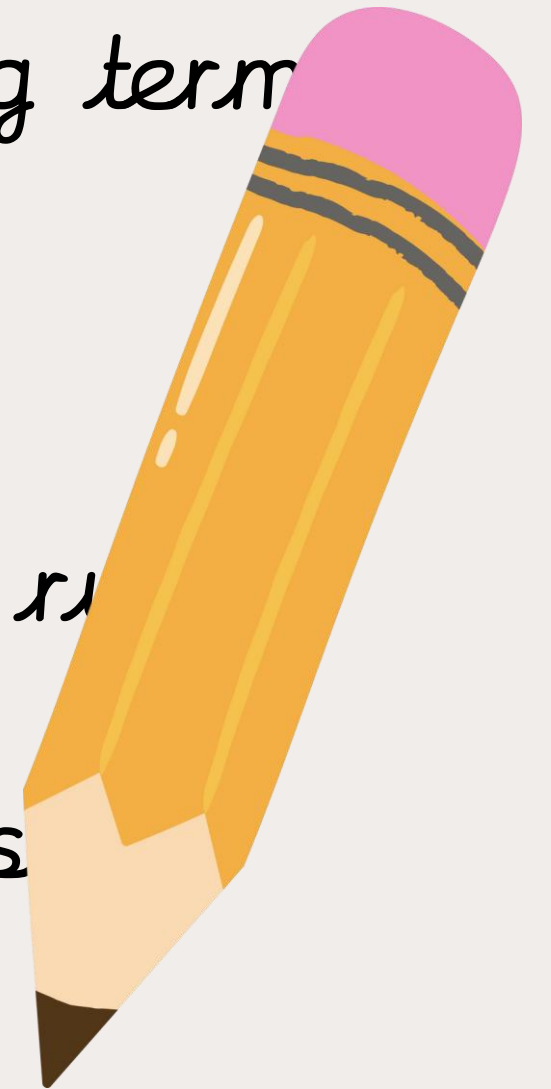


As a school we follow the Talk4Writing philosophy when teaching writing. This year our main focus is on:

- To hold pencil correctly
- To form letters correctly

(We will be going onto cursive script in the spring term)

- To write with spaces between words.
- To start a new sentence with a capital letter.
- To finish sentences with a full stop.
- To write simple sentences using phonics and spelling rules.
- To write commonly used words accurately.
- To use good vocabulary - adjectives, similes, adverbs.
- To provide opportunities for writing.



# READING AND PHONICS

- End of Year 1 Phonics screening - June 2026
- Handout in classrooms for reference and workshop in January 2026
- Daily Phonics lessons.
- Later in the year, children will bring home their weekly phonics to continue to practise.
- Each child's reading book only uses words which contain the sounds the child already knows.



# READING



- It takes place throughout the day in many different forms
- Please spend 5-10 minutes every day listening to your child read and discussing the book with them, then write a comment in their reading record book.
- We would encourage you to both read to and with your child. Children learn to love reading and love books when they see their adults being enthusiastic about books.
- We use the Read, Write, Inc. scheme.
- Children will be given a high-quality reading books from the library each week. These books will be given out every Thursday and please can these be returned by the following Tuesday.



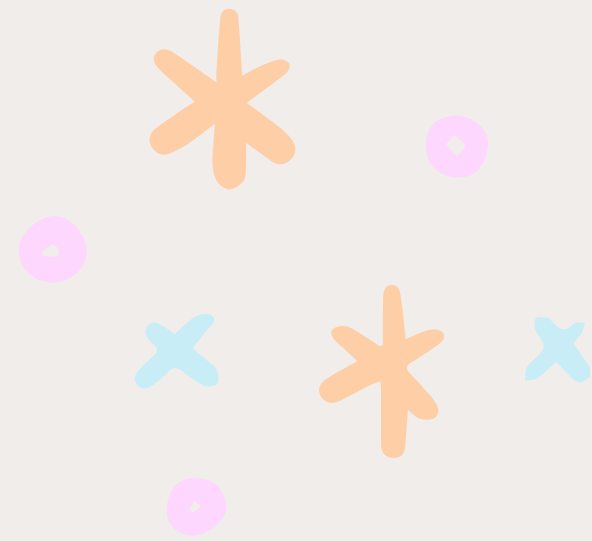
# WE FLOURISH IN YEAR 1

We continue to be mindful of children's emotional health and mental wellbeing. In Year 1, we support children through:

- Use of the Cardinal Newman 'Learning Powers' in our everyday learning
- Use of Zones of Regulation
- Flourish sessions: Taught every week, linked to our RSE Scheme (Ten:Ten).
- Access to 'what I want my teacher to know' box.
- Plenty of outdoor learning and access to physical activity.
- Open door policy (for children and parents!)
- Positive praise and celebration of achievements.



# P.E.



- This should be in school every day (Earrings must not be worn on P.E. days.)
- Please ensure your children have both plimsolls and trainers.
- Green Class - Wednesdays and Thursdays
- Yellow Class - Wednesdays and Thursdays
- PE kit will be sent home at the end of each half term to be washed and for families to check everything still fits!



# OTHER INFORMATION

- Colouring Book - Please provide your child with a thin colouring book to use at wet play.
- Tissues - please provide a box of tissues to share with the class.
- Consumables - we would be grateful for a voluntary contribution of £. - towards cooking ingredients, seeds, bulbs, etc (listed as 'Sundries' on Scopay)
- School Trip to Brooklands Museum - May 2026



# PARENT HELPERS

- If you have some free time on a weekly/fortnightly basis and would like to help with the class, then please do contact us.
- If you have any talents/ your job lends itself to our topics we would LOVE to have you in! (Nurses, doctors, past Cardinal Newman pupils)
- DBS check is needed (school office)





# PARENT COMMUNICATION

- Please contact the office or let us know in the mornings.
- A member of staff from both classes will be at the classroom door each morning and afternoon
- Overview
- Parent Reps
- Parent Consultation Evenings take place this half term (Tuesday 22nd & Thursday 24th October 2:30-6:30pm.)
- Refer to our website and school newsletters for updates on clubs, events, curriculum information etc.



# CURRICULUM CONSUMABLES FUND

- A voluntary donation of £10 can be paid through ScoPay to help support the ongoing cost of consumables used throughout the curriculum (such as Science and Design & Technology)
- We appreciate any contributions that can be made to support high quality resources for your children



# SCHOOL DEVELOPMENT FUND



1. The Governors' Fund has been renamed School Development Fund
2. Made up of voluntary donations from parents of children at Cardinal Newman
3. Used to enable the school to develop both buildings and resources to provide the best education for our children
4. School Development Fund covers items beyond what government funding can cover



# ANY QUESTIONS?

*Staff will be available in the classrooms after this session but please be aware we will not be able to have any conversations about individual children.*

*There will be a form available for you to record your child's pick up arrangements.*

Thank you,  
The Year 1 Team

