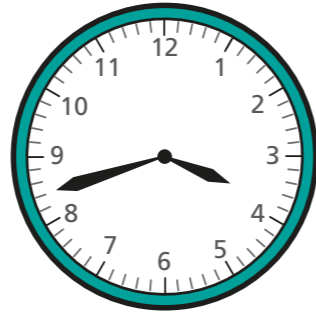


# Start and end times

1 Brett gets home from school at this time in the afternoon.



He wants to watch a cartoon at 4:00 pm.

a) How long does Brett have to wait for the cartoon to start?

minutes

b) The cartoon lasts for 25 minutes. What time will it finish?  
Give your answer as a 24-hour clock time.

\_\_\_\_\_

2 Nijah has football practice at 16:10

It lasts for 45 minutes.

a) What time will it finish?  
Give your answer as a 24-hour clock time.

\_\_\_\_\_

b) It takes Nijah 15 minutes to get home.

What time will she get home?

Give your answer as a 24-hour clock time.

\_\_\_\_\_

3 The table shows the duration of some lessons at school.

Lesson	Duration
Maths	50 minutes
Phonics	30 minutes
Science	45 minutes
English	55 minutes

a) Maths starts at 09:15

What time does it finish?

\_\_\_\_\_

b) Science starts at 13:30

What time does it finish?

\_\_\_\_\_

c) Phonics finishes at 10:50

What time does it start?

\_\_\_\_\_

d) English finishes at 15:10

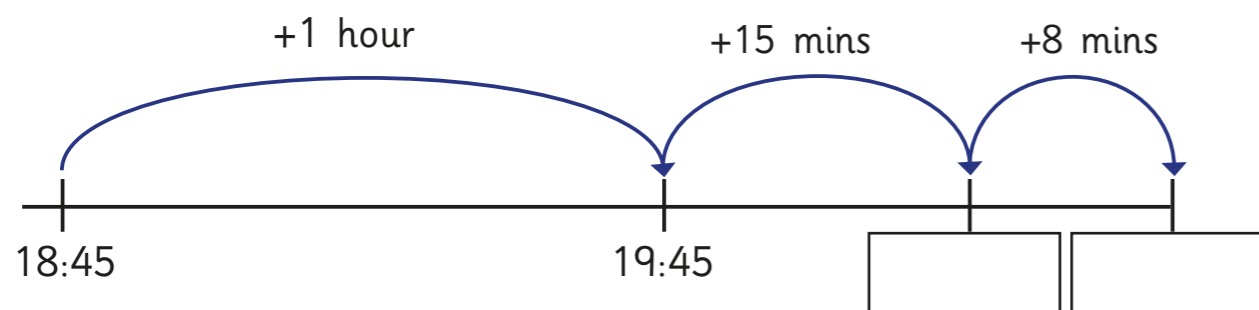
What time does it start?

\_\_\_\_\_

How did you work this out? Talk to a partner.



- 4 Tom wants to watch a film at 18:45  
The film lasts 1 hour and 23 minutes.  
Tom works out what time it will finish.  
Here are some of his workings.



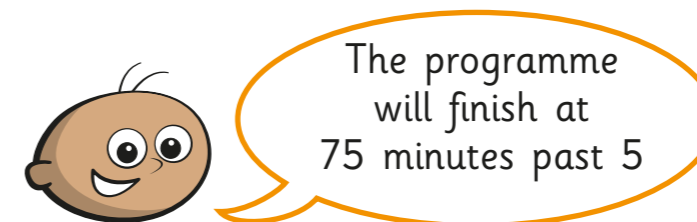
Complete the number line to work out what time the film will finish.

The film will finish at \_\_\_\_\_

- 5 Fill in the clocks to show the finish times.

	Start time	Duration	Finish time
a)		35 minutes	
b)		1 hour and 17 minutes	
c)		71 minutes	

- 6 Tommy wants to watch a TV programme at 17:00  
The TV programme is 75 minutes long.



Do you agree with Tommy? \_\_\_\_\_

Talk about it with a partner.

- 7 Mr Lee needs to get the train.

The timetable shows what time the trains leave.

15:17	15:49	16:04	16:25	16:55
-------	-------	-------	-------	-------

- a) The train journey lasts 127 minutes.

Mr Lee needs to arrive at his destination by 18:15

What is the latest train he can get?

\_\_\_\_\_

- b) Mr Lee lives a 19-minute walk from the station.

What time does he need to leave his house to catch this train?

\_\_\_\_\_

